

Who is CPS Energy?

Established in 1860, CPS Energy is the nation's largest public power, natural gas, and electric company, providing **Safe, Reliable, and Affordable** service to 884,811 electric and 366,709 natural gas customers in San Antonio and portions of seven adjoining counties. Our customers' combined energy bills rank among the lowest of the nation's 10 largest cities – while generating \$8 billion in revenue for the City of San Antonio for more than seven decades.

As a trusted and strong community partner, we continuously focus on job creation, economic development, and educational investment. True to our **People First** philosophy, we are powered by our skilled workforce, whose commitment to the community is demonstrated through our employees' volunteerism in giving back to our city and programs aimed at bringing value to our customers.

CPS Energy is among the top public power wind energy buyers in the nation and San Antonio is #1 in Texas for solar energy capacity. For more information, visit cpsenergy.com.



How can you get more information about this project?

The CPS Energy project team will post project information on the CPS Energy website at cpsenergy.com/infrastructure

Who can answer your questions?

The website will include regular updates on the project as steps are completed. If you have questions about the project, please call, write or email:

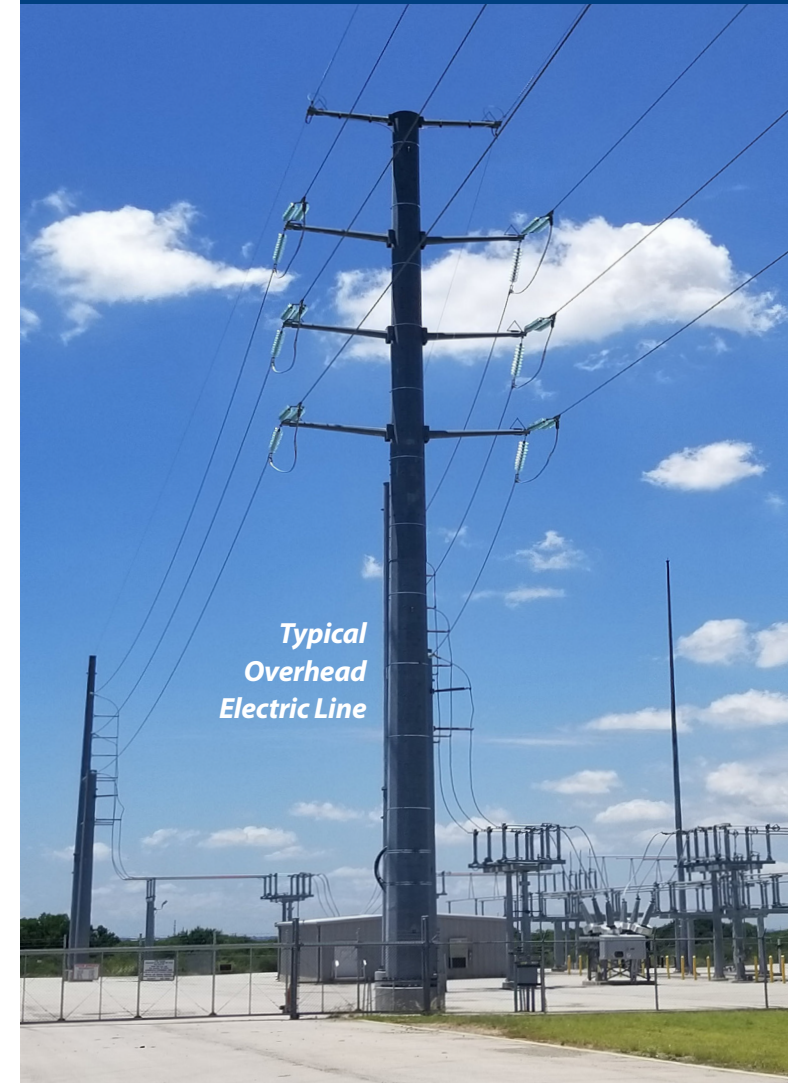
CPS Energy

Darcy Ralston, Project Manager
Hunt Ln. to Pinn Rd.
Transmission Line Rebuild Project
Mail Code RT0801
500 McCullough Ave.
San Antonio, Texas 78215
(210) 353-2041
DLRalston@cpsenergy.com



HUNT LANE TO PINN ROAD

TRANSMISSION LINE REBUILD PROJECT



Typical
Overhead
Electric Line

RELIABILITY | CUSTOMER AFFORDABILITY | SAFETY
SECURITY | RESILIENCY | ENVIRONMENTAL RESPONSIBILITY

FINANCIALLY RESPONSIBLE

INFORMATION ABOUT THE HUNT LANE TO PINN ROAD TRANSMISSION LINE REBUILD PROJECT

What is the Hunt Lane to Pinn Road Transmission Line Rebuild Project?

This project rebuild includes replacing existing 138kV transmission structures between the Hunt Lane and Pinn Road substations. The transmission line route is approximately 2 miles long and begins at the Pinn Road substation, near the intersection of Pinn Rd. and Westlawn Dr. The line proceeds west from the substation along the existing transmission Right-of-Way. The route crosses Military Dr., SW Loop 410, Adams Hill Dr. and Hunt Ln., before ending at the Hunt Lane substation, near the intersection of Hunt Ln. and Marbach Rd.. See project map for details. It involves completely removing and rebuilding the transmission line, including foundations, transmission structures (poles) and electrical wires. The existing lattice (webbed) structures will be replaced with solid steel poles.

Construction is tentatively scheduled to begin October 11, 2021.
The tentative scheduled completion date is April 29, 2021.

How might this project affect you?

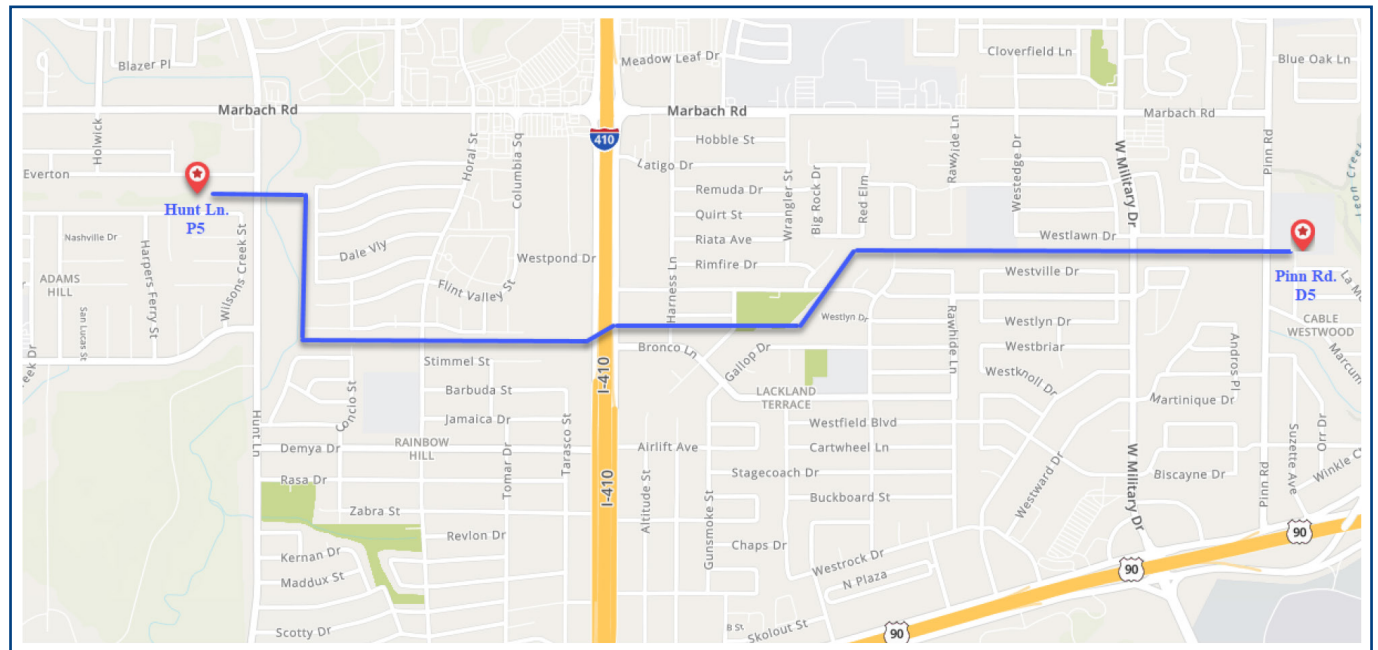
Our contractor will work to minimize impact to area residents. Construction activities will be focused around the existing transmission line route shown on the Project Location Map.

Activities that may be typical during the construction project are the presence of construction equipment and materials, as well as temporary partial road closures while construction is in progress.

Why is this project needed?

Maintaining our customers' need for reliable electric power is of utmost importance. The project will improve the quality and safety of an aging transmission line and help ensure electric reliability between the Hunt Lane and Pinn Road substations.

Project Location Map



Examples of Transmission Line Structures



Existing Lattice Structure



Proposed Solid Pole Structure